



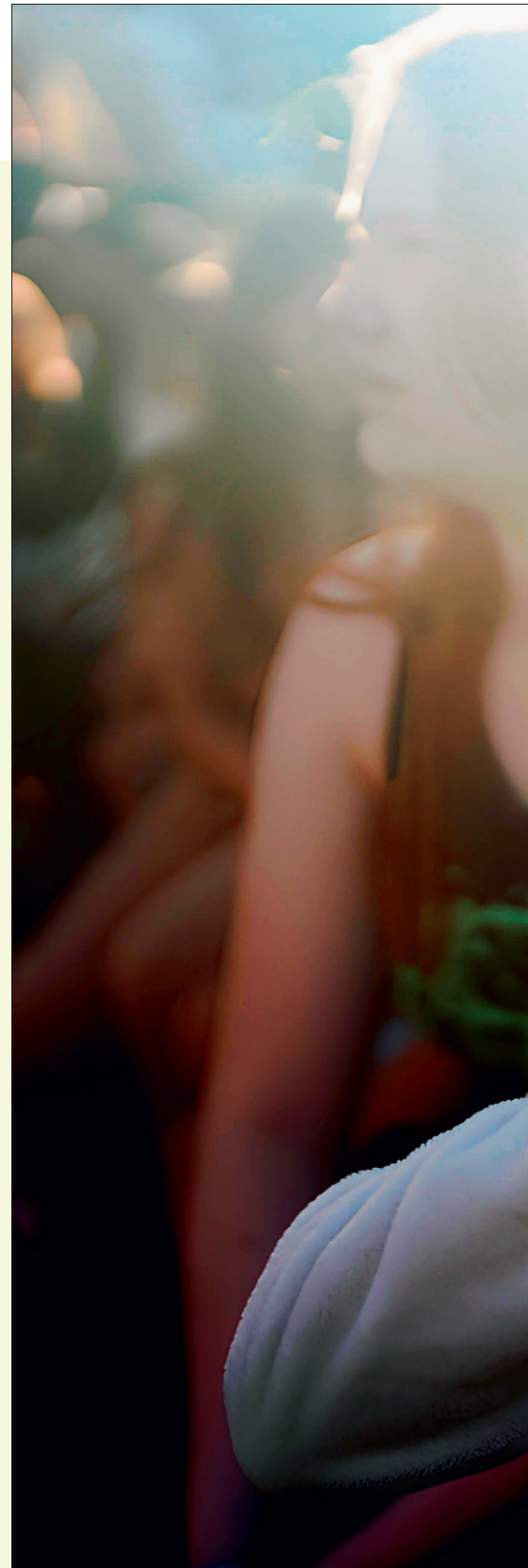
ANNUAL REPORT
2023

"DIE ARCHE" KINDERSTIFTUNG CHRISTLICHES KINDER- UND JUGENDWERK



TABLE OF CONTENTS

- 4 Foreword**
- 6 Year in review**
- 8 Our vision and goals**
- 10 What we offer**
- 22 Other areas of work at the "Arche"**
- 24 Overview – locations, facts and figures**
- 26 The "Arche" in the media**
- 30 Looking ahead**
- 31 Finances**
- 35 Imprint**





FOREWORD

Dear supporters of the "Arche",

The famous U.S. President John F. Kennedy once said, "The only thing more expensive than education is no education." This statement perfectly captures the theme of this year's annual report. More than ever, we are witnessing significant learning gaps among the children at the "Arche". The PISA study repeatedly highlights how far Germany lags behind in global education rankings, and closing this gap will require considerable effort. That's why in 2023, we placed an even stronger focus on education. We introduced additional learning coaches in public schools to provide targeted support for children struggling to keep up in class.

At our "Arche" centers, we also expanded one-on-one support, with dedicated volunteer "learning mentors" helping individual children with homework and tutoring, allowing us to address learning deficits more quickly and effectively. Another key initiative has been our growing team of reading dogs. We've seen firsthand the incredible impact animals, especially dogs, can have on children's development. When a child reads to a dog, there's no pressure, no judgment, and no corrections. This stress-free environment fosters confidence and enjoyment in reading, leading to noticeable improvements.



Our learning camps, designed to help students prepare for final exams, were such a success that we expanded them further. We also had to increase the number of holiday camps, which give children the chance to get out of their neighborhoods and experience new environments, because demand continues to grow. Among the many children joining us are those from refugee families, who often lack essential support structures. At the "Arche", we strive to provide them with a sense of stability and belonging.

Beyond education, another major focus has been ensuring that children and families have access to food. Alongside our school breakfast programs and the meals we provide at the "Arche", we've seen a rising number of parents seeking food donations. With inflation making necessities unaffordable for many, and food banks struggling to meet demand, our role in providing support has become more critical than ever. As social challenges continue to grow, so does our work. We are constantly expanding our services and launching new projects. However, none of this would be possible without dedicated volunteers and staff. Finding enough people to meet these increasing needs isn't always easy, which is why we are especially grateful to everyone who has contributed their time, energy, and resources. Thanks to you, we not only maintained and expanded our programs in 2023 but are now planning even more initiatives for 2024.

In the Bible, Jesus says, "I am with you always." This promise strengthens us in every challenge we face. And we are incredibly blessed to have a strong network of supporters—including you—who stand with us in this mission. From the bottom of our hearts, thank you.

With kind regards and God's blessing,

Pastor Bernd Siggelkow,
Founder and director of the "Arche"

"The PISA study repeatedly highlights how far Germany lags behind in global education rankings."

Bernd Siggelkow

YEAR IN REVIEW

At the "Arche", we believe that every child is unique and brings something special into the world. Our mission is to help children discover and nurture this uniqueness. Education plays a crucial role in this process, as it not only provides life skills but also fosters strong relationships. Because meaningful learning happens in the context of secure and reliable connections, all our educational programs are relationship focused. At the "Arche", we create a safe and supportive environment where children feel emotionally secure, an essential foundation for learning and personal growth. Through targeted educational initiatives, we help uncover and develop each child's talents and abilities.

Education has always been a key part of our work, but in 2023, we placed an even stronger emphasis on it. Since the COVID-19 pandemic, a significant number of children have struggled to meet their academic goals. Many also found it difficult to reintegrate into social life after prolonged periods of remote learning. Teachers faced their own challenges, trying to balance curriculum demands with the individual needs of their students. Some, depending on their experience, creativity, and dedication, managed this balancing act remarkably well. However, the gaps in learning and social skills became increasingly evident.

To support both students and teachers in overcoming these challenges, we introduced intensive learning coaches at partner schools. These coaches worked alongside students in daily lessons, focusing on core subjects such as German, math, and a foreign language. The impact was particularly noticeable in schools where teacher shortages led to frequent class cancellations and a lack of after-school support. Many of these schools also had a high percentage of children from non-German-speaking backgrounds. Unfortunately, additional DaZ (German as a Second Language) lessons were often inadequate due to staffing shortages. This is where our intensive learning coaches made a significant difference, providing much-needed stability and individualized instruction.

Their presence was deeply valued by teachers. As one of our learning coaches in Berlin-Hellersdorf put it,

"I've received this feedback many times since the start of the project. With so many lessons lost due to illness and a shortage of substitute teachers, every session I spend with the children is invaluable."

Beyond academic struggles, child poverty and neglect, both in terms of education and material needs, remain harsh realities in the schools we serve. These challenges significantly impact children's ability to engage in learning and stay motivated. To address this, we have intensified our efforts to provide targeted support for those most affected.

Since 2023, our intensive learning coaches have been active not only in Berlin but also in Osnabrück, Potsdam, and Herne, closely linked to our locations in these cities. Each coach worked with 25–30 children per week, with most students attending sessions at least twice a week for consistent, focused learning. While the primary focus was on 3rd and 4th graders, students from other grades were also supported as needed. Depending on availability, the learning coaches worked between 20 and 40 hours per week, providing extra tuition both in schools and at neighboring "Arche" centers in the afternoons, doubling their impact for some students.

Each child was supported for about six months. If they made rapid progress, they could complete the program earlier. However, after the six-month period, we reassessed each child's situation and formed new learning groups as necessary. This process involved close collaboration between "Arche" educators, teachers, and, in some cases, school administrators.

Through personalized teaching methods and strong, trusting relationships, our intensive learning coaches not only helped students close their academic gaps but also supported them in rebuilding their confidence and social skills, empowering them for a brighter future.

The learning coaches also observed that many children were struggling with their social-emotional skills. They were often overly playful, sometimes physically intrusive, and had a very low tolerance for



▲ Children can overcome their academic challenges with the support of the "Arche's" learning coaches

frustration. Disputes and conflicts frequently escalated into aggressive arguments, with both boys and girls resorting to violence. Additionally, many children initially displayed withdrawn and shy behavior, while others stood out in the classroom due to disruptive or antisocial tendencies.

These challenges highlight the importance of focusing on social skills, which is why the intensive learning coaches remain key points of contact for the children. Many students appreciate the individual attention they receive in one-on-one or small group settings, which allows for a more personalized approach.

"Strengthening social skills, building self-confidence, and, most importantly, creating a sense of emotional

security are essential aspects of my work", explains an intensive learning coach from Osnabrück. Similarly, our learning coach in Herne emphasizes the project's significance beyond academic support: "Learning coaching gives me unique opportunities to show children that their participation isn't a result of being labeled 'stupid'. The safe and supportive environment also allows them to share personal challenges with me, such as parental divorce or family grief. This enables me to support them not only as a teacher but also as a compassionate mentor."

It is truly rewarding to witness how the children not only improve academically but also develop trust and recognize their own worth. We are thrilled that this project will continue in 2024!

OUR VISION AND OUR GOALS

Our vision:

We make children strong for life!

The key to a child's heart is love and relationship.

**At the "Arche", children experience appreciation and trust –
regardless of their social background.**

We are and will remain at their side continually.

Our goals

At the "Arche", we believe that every child is unique and full of potential. Our mission is to help children discover their strengths and empower them for life! We stand for fostering talent, enabling education, and creating opportunities. Our goals are as follows:

Building self-esteem

Through reliable and supportive relationships, we help children develop a strong and healthy sense of self-worth.

Uncovering and developing potential

We encourage children to explore their strengths, nurture their abilities, and believe in their own potential.

Providing meaningful leisure activities

We organize diverse recreational programs, giving children opportunities to develop their interests and enjoy a fulfilling childhood.

Supporting learning and education

Beyond school, we offer additional learning support to help children make progress, gain confidence, and broaden their educational horizons.

Teaching social skills

By fostering a safe and supportive environment, we help children strengthen their social abilities, particularly in managing conflicts and relationships.

Provide material assistance

Wherever there is urgent need, we supply children and families with free meals and clothing.

Encouraging personal responsibility

Through age-appropriate guidance, we help children and teenagers develop into confident and responsible individuals.

Promoting a healthy lifestyle

We educate children and families on the importance of sports and nutrition to encourage lifelong healthy habits.

Strengthening parents and families

We support parents in developing their parenting skills and offer guidance to help them create a nurturing home environment.

Fostering inclusion

We create spaces where all children feel welcome and can fully participate in social life, free from exclusion.

Advancing equal opportunities

We see it as our responsibility to raise awareness about social injustice and advocate for long-term improvements in the lives of disadvantaged children and families. By working toward these goals, we strive to give every child the chance to thrive and build a brighter future!

"I'm better at school now. The tutoring really helped me."

Laura, 12 years old

"Lunch is really tasty. My mum doesn't cook at home because she has to work and now has two jobs."

Ronja, 10 years old

"I didn't even know that fries were made from potatoes. I always thought they were just there."

Ömer, 9 years old

"What do you mean, you don't live in the "Arche"?! You're always there for me when I need you. And I always need you. So you must live here!"

Fatma, 11 years old

"I find some children really annoying! But that's just the way it is. We're a family and we all stick together. Forever!"

Paula, 12 years old

WHAT WE OFFER

Recreation – meaningful leisure activities

Providing a variety of engaging recreational opportunities is a key part of our work. Every day, children and young people can enjoy The "Arche's" indoor and outdoor spaces as part of our open program. The focus is on playing, running, staying active, and—most importantly—having fun! In addition

to a wide range of games and sports activities, we offer creative, musical, and group-based workshops at set times each week. Special outings and lively celebrations further enrich the experience, making The "Arche" a place where children can explore their interests, develop new skills, and simply enjoy being kids.



3,144

recreational activities such as arts and crafts, soccer training or guitar lessons were held regularly in the "Arche" locations or digitally

15,836

children and parents attended the summer festivals, Christmas celebrations, outdoor festivals and open days

6,291

children were delighted to receive a personal gift for Christmas

95,000

shimmering soap bubbles were blown into the sky by our children

2,700

goals were scored in various football matches at our "Arche" locations

Meißen

Like all our other facilities, the recreational activities at the Meißen facility are organized into daily activities, ongoing courses and workshops throughout the year, and special holiday programs. In 2023, the rotating weekday offerings included fitness training, a football club, a gardening club, skateboarding courses, as well as book and craft sessions. Our aim is to cover a wide range of interests, whether familiar or new, to ensure that children have the chance to explore and enjoy activities they like or wish to try. Based on our experience, we've found that children are highly motivated and eager to learn, with the caregivers focusing on encouraging practice, persistence, and effort.

The daily program was further enriched by special activities made possible through collaborations with our partners. These included rehearsing a breakdance show, a dance course, and a theater project.

The results of these projects are regularly showcased at festivals or special performances, which has significantly boosted the children's self-confidence, courage, and team spirit.

During school holidays, we also organized age-specific camps, each with a structured program designed to strengthen and promote the children's skills. These camps offered a variety of experiences, including anti-violence courses, self-defense training, career orientation, and crisis management. A notable example was our TAFF_WG (Tough Shared Living): for an entire week, teenagers had to navigate everyday life together, from cooking meals to managing their finances and even doing their own laundry. Through these activities, they built self-confidence and a sense of responsibility, not only for themselves but also for each other. They became "tough"—practicing non-violent, respectful interactions with one another. The noticeable positive changes in their behavior were a hopeful sign for their communities.



▲ Breakdance and dance courses were among the recreational activities offered at "Arche" Meißen

WHAT WE OFFER

Food – free meals

In many of our "Arche" families, a shared hot meal is not part of the daily routine, and breakfast before school is often missing. To address this, we begin each child's day at the "Arche" with a free, hot lunch. Depending on the location, we also offer an evening meal as an alternative. Additionally, where the "Arche" is involved in early care programs at schools, we provide a daily breakfast for the children.

These healthy, balanced meals play a vital role in establishing a consistent daily routine, giving children the energy they need to face the challenges of the day. More than just nourishment, mealtime is an opportunity for children to experience community and connection. We view sharing meals together as an essential time to engage with the children, strengthen relationships, and have meaningful conversations.



26,840

hot meals were served to children and teenagers in our facilities; mostly lunch, but also dinner in some "Arche" locations

421

homeless people were provided with warm meals every month in Berlin

53,792

breakfasts were served to the children of the primary schools in our neighborhood

10,300

interesting discussions were held and a good exchange took place over lunch

20,000

-times the children asked for spaghetti with tomato sauce or pizza

Frankfurt

In Frankfurt am Main, for instance, the "Arche" team arranged breakfast at two primary schools before lessons began. Additionally, we provided 600 hot meals a day at four local locations. Despite these efforts, it often wasn't enough. In 2023, new children and teenagers were arriving almost daily, and conversations with them revealed the financial struggles many families are facing.

Children have become more comfortable asking for food. At the start of 2023, we began regularly distributing food bags at the end of each month, in addition to our standard meal offerings. We observed that hunger among many children increased towards the end of each month as their families' resources ran out prematurely.

To help address this, we put together food packages containing long-life staple items like milk, muesli, pasta, rice, canned goods, and occasionally items like cocoa, jam, salt, sugar, or flour. Within a very short time, 500 bags were taken home by grateful children or their parents.

We are constantly balancing who receives how much and where we can make exceptions. This isn't always easy, even when we know the individual circumstances of the families. Too many people are in need and can no longer manage, even with an income from regular work. Need has taken on many faces, and we often find ourselves wondering how much longer we will be able to continue meeting these growing needs.



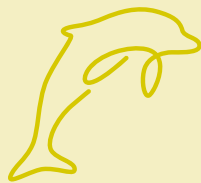
▲ Site Manager Tobias Lenze in the food warehouse at "Arche" Frankfurt-Griesheim

WHAT WE OFFER

School holidays – exciting holiday camps

The "Arche" regularly organizes holiday camps for children and teenagers. For many, it is their only chance to go away during the holidays, as their families often lack the financial means to do so. At these camps, children have the opportunity to relax, leave behind their urban neighborhoods, and temporarily escape their challenging lives. Through exciting competitions, adventurous

activities, and a structured daily routine, they experience a strong sense of team spirit, a family atmosphere, and a supportive community. Our experience shows that these holiday camps provide our children and teenagers with unforgettable experiences and lasting memories. Often, these camps become pivotal moments in their personal development, offering them valuable lessons that stay with them for years to come.



1,955

children and teenagers experienced unforgettable holidays at the "Arche" camps

96

"Arche" holiday camps were held throughout the year

794

excursions were organized by the "Arche" locations

120

-times our children listened intently to the stories that were told around the campfire

24,480

kilometers were covered on joint bicycle tours

Potsdam

As always, the 2023 holiday trips were a highlight of the year for the "Arche" children in Potsdam. The youngest 26 children spent a few days at the "Arche" Children's Ranch in Brandenburg, while 27 teenagers traveled to the "Haus am Sund" youth guesthouse on the island of Rügen. The direct contact with nature at the "Arche" Children's Ranch had a wonderful effect. Under the motto "Who am I?", the program provided the children with valuable insights. Walks, joint activities on the farm, and cozy campfire evenings created a relaxed atmosphere and a true sense of holiday spirit.

The teenagers at Rügen experienced a similarly enriching time. Most of them came from families with multiple challenges.

To ensure both safety and personalized support, the camp was staffed appropriately. The motto for the teen camp was "FurMut", a word combining "fear" (Furcht) and "courage" (Mut). Along with topics such as puberty and school-related changes, we created space to discuss deeper concerns like fear of war and internal conflicts—issues that weigh heavily on our teens, often draining their energy and leaving them feeling hopeless and directionless.

Despite the heavy topics, there was also plenty of relaxation and fun. Activities like beach volleyball, beach yoga, excursions, night hikes, and kayak tours brought joy and excitement. Together, everyone shared an intensive time, full of important moments that strengthened their relationships and built a sense of community.



▲ "Arche" Potsdam holiday camp at a lake in Brandenburg

WHAT WE OFFER

Learning - effective educational support

At the "Arche", we are dedicated to ensuring that a child's educational success is not determined by their social background. To achieve this, we provide consistent support to children who grow up in particularly challenging circumstances throughout their entire school career. Creating a positive learning environment

that encourages children to overcome setbacks and develop their full potential is a key focus for us. Our experience has shown that "education requires relationships". That's why we approach each child in a very individual and personal way, helping to build their self-confidence, encouraging independence, and celebrating their successes together.



4,406

children and teenagers were supported in their learning by the "Arche" every month

151

teenagers were provided with effective assistance in their search for internships and apprenticeships

2,087

children were supported on a monthly basis with learning programs such as individual and digital tutoring, reading support, speech therapy, help with schoolwork and many other services

1,000

hours our "Arche" reading dogs listened patiently to the stories Read

505

backpacks were distributed to our pre-school children containing the most important materials for their start at school

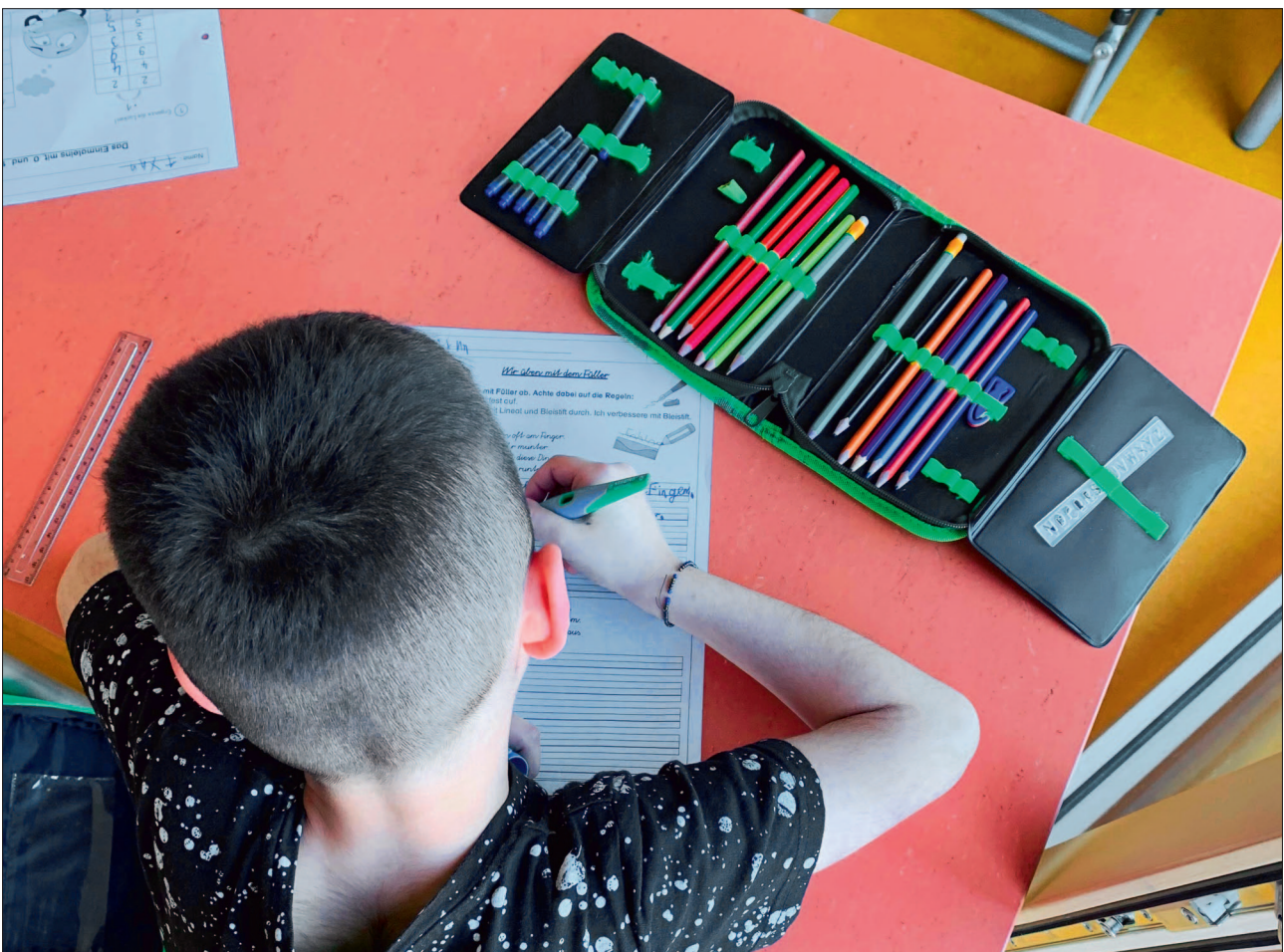
München

In 2023, the educational program at the "Arche" in Munich-Moosach was marked by a wide range of learning aids and activities that shaped the daily routine. Every day, 45–60 children and around 20 teenagers received support with their homework, reading, or preparing presentations. Individual tutoring was also available three days a week.

Completing homework is a daily challenge for most children. At the "Arche", we place great importance on the regular completion of homework, introducing children to routines early on. We take an error-friendly approach to ensure that no child loses their motivation to learn. To further motivate the children, we use reading and math passports or reward points that can be exchanged for toys or magazines.

Holiday excursions, museum visits, and theme days also help impart knowledge in a playful way. School certificate parties and the collective evaluation of individual progress are integral parts of the annual program.

Our strongest motivation is to ensure that no child is ever "left behind", even when the going gets tough. When the children grow up, they often express gratitude for our unwavering support. "Thank you for always motivating me to read and do my homework; otherwise, I would never have gotten this trainee position." These words remind us of the importance of our educational work and the profound impact of personal relationships. Genuine, sincere interest in the children is key to motivating them to reach their learning goals every day.



▲ Completing homework is a daily challenge

WHAT WE OFFER

Friends – sustainable relationship work

At the "Arche", we provide children and young people with a safe space where they feel valued and can develop their personalities. Many of the children who attend our facilities struggle with low self-esteem and face challenges in building healthy relationships due to their social or family environments. Our employees play a crucial role as important contacts for these children, helping them discover their

abilities, encouraging them, and supporting them in developing their social skills. Our relationship work is grounded in a Christian view of humanity. We do not see ourselves merely as service providers but as individuals dedicated to prioritizing our relationship with each child. As a result, our work is always relationship-oriented, rather than program-oriented, ensuring that we focus on the needs and well-being of each child in a personal and meaningful way.



4,081

children and teenagers celebrated their birthday at the "Arche"

4,578

children and teenagers visited the "Arche" for the first time in 2023

833

children participated every month at the "Arche" children's parties

5,834

birthday songs were sung in the "Arche"

950

birthday cakes were cut during the year and eaten at the parties

Hamburg

For shy, insecure, or introverted children, we offer support through our "Lernort" project, which was launched in Hamburg. In this program, volunteer mentors work with children one-on-one for at least a school year. While the primary goal is to improve academic performance, it's equally important that the children gain the confidence to participate in lessons again and discover that learning can be enjoyable. With the help of trained volunteers and carefully selected learning materials, this approach has proven successful. In 2023, there were 25 mentor-mentee pairs at the "Arche" in Hamburg, though many children were still on the waiting list.

One of the pairs was twelve-year-old Nina and her mentor, Marion. Every week, Nina eagerly awaited her

sessions with Marion. By the end of the first term, she had already made noticeable progress in school. Initially very shy, she eventually gathered the courage to perform on stage at the "Arche". Nina became more confident, started taking on tasks independently, and made close friends. Her story is just one example of how the program has helped children grow. Similar to other mentor pairs, Nina's progress was clear after only a short period, and her confidence continued to improve.

The "learning places" program has been a great success, which is why we plan to expand it to other "Archen" in Hamburg. This principle of building reliable, supportive relationships has also proven effective in other areas of our work.



▲ Learning duo at the graduation ceremony in the "Arche" Hamburg-Harburg

WHAT WE OFFER

Family – help and advice for parents

Many of the families of our children face significant challenges, including unemployment, limited financial resources, lack of social participation and integration, unstable family relationships, and frequent conflicts. In this context, parents play a crucial role as primary caregivers. That's why we place great importance on supporting parents in

their parenting roles and strengthening families as a core part of our work. To achieve this, we regularly organize activities for the whole family. Through festivals, excursions, and other special shared experiences, we create opportunities for parents and children to enjoy meaningful moments together that enrich their everyday lives and help strengthen their relationships.



25,971

meetings with parents took place with the "Arche" in 2023

140

families were reached each month through our outreach work

3,825

parents took part in the parent cafés or parent breakfast

3,325

families were provided with food and hygiene products

3,600

liters of coffee were drunk at our parent breakfasts

Berlin-Hellersdorf

In 2023, the "Arche" in Berlin-Hellersdorf faced significant challenges. The insecurities within disadvantaged families became even more apparent as the cost of living continued to rise. As a result, the demand for food parcels grew. Despite these increasing difficulties, the Hellersdorf team worked hard to strengthen family bonds in this tough situation. Regular parent breakfasts, for instance, created a space for open dialogue. Parents were also supported during visits to doctors or authorities, and in interactions with the youth welfare office or schools. The "Arche" itself provided counseling on parenting issues, managing daily life, crisis intervention, and illness. One of the standout projects last year

was a cooking course for parents, which was attended exclusively by mothers. The focus was on the importance of a balanced diet, and it also served as an opportunity for cultural exchange.

Despite the financial struggles many families faced, the Hellersdorf team was able to celebrate several successes in 2023. Feedback from parents confirmed the positive impact the programs had on their lives, helping them support their children to the best of their ability. The "Arche" remained a crucial support system for these families during difficult times. This recognition reinforces the fact that we are needed, and it motivates us to keep pushing forward in the future.



▲ Parents receive support services, counselling and, if necessary, food donations at the "Arche"

OTHER AREAS OF WORK AT THE "ARCHE"

What other initiatives have we launched at the "Arche" to help address the high number of students with poor academic skills, and to support school in this area?

"HarmonyDogs" – learning to read with dogs

Since the release of the latest IGLU study, what we've been noticing in our facilities has now been confirmed publicly: reading skills among primary school students are on the decline. The study revealed that 25% of fourth-graders in our country cannot read properly—or at all. This result doesn't come as a surprise to us. In our daily work, we've noticed that the figure may even be higher for the children who come to us. In many households, books are hard to find, and children spend a lot of time on computers, mobile phones, gaming consoles, or in front of the TV. This does nothing to improve their reading skills, in fact, it often makes the problem worse.

It's clear to us that action needs to be taken. In the past, we've tried various reading campaigns to motivate children, sometimes with the help of celebrities, but unfortunately, the success was limited. However, for several years now, we've been using dogs for educational and therapeutic purposes at the "Arche". It seemed natural for us to explore whether animal support could help improve learning outcomes for our primary school students, by using "reading dogs". We were able to base this on existing research, as the concept had been used successfully elsewhere. In 2023, we launched our "HarmonyDogs" project at "Arche" Berlin-Hellersdorf, introducing the first reading dog. We trained a staff member and her dog to help students improve their reading skills. Our goal was to see whether this method could support children with learning difficulties, both at this location and across other "Arche" facilities.

After the training, we put the project into practice. Oscar, a nine-year-old third grader from a nearby school, found reading incredibly difficult. Our staff member Conny and her dog Luna invited him into the reading room, where they chose a book for him to read aloud. The aim wasn't to correct his reading, as no one corrected him during this exercise, not even



▲ Reading dog in action at the "Arche"

the dog. The main goal was simply to spark an interest in reading. And the result? It was a complete success! Not only did Oscar, the little blonde boy, return every week after that, but other children, who had been peering curiously through the glass door during the first reading session, also joined in. They, too, soon experienced the joy of reading and learning.

In 2023, employees at our locations in Hamburg, Osnabrück, Leipzig, and Düsseldorf also expressed interest in using this learning method with their own dogs. Some staff members have already completed their training, while others are currently undergoing theoretical and practical training to eventually support even more children. In addition to promoting reading, we also successfully use our "HarmonyDogs" project in preschools and schools to support teaching and within families. At work, we offer programs on how to interact with dogs, and of course, they are also there simply to cuddle with our children. "HarmonyDogs" has become an integral part of our daily routine, and new opportunities continue to emerge, allowing us to support children in various areas of their lives.

We are constantly receiving new requests from public schools to replicate what we've been doing with



▲ Opening of the "Arche" in Stuttgart

our dogs at the Mozart School in Berlin for seven years now: every fortnight, we visit the school to teach topics such as social and learning skills, team building, self-confidence, violence prevention, lesson introductions, and dog training. As there are no limits to the work we can do with our dogs, and as we continue to train more human-dog teams, we anticipate even more exciting projects for both the children and us in the years to come.

2023 – a year of decisions

The idea of opening a location in the capital of Baden-Württemberg started taking shape in 2022. We continued to pursue this project and were finally able to invite guests to the opening of the new "Arche" in Stuttgart in October 2023. Since then, this region has become an integral part of our everyday life at the "Arche". Additionally, the daycare center for children in Berlin-Hellersdorf, located on the grounds of the "Arche" headquarters, is also coming together, and we are on track for its official launch in 2024. The demand for childcare places in the district is high, and this will be our third "Arche" daycare center.

Through connections with a parish in Bremerhaven, specialists from the social and psychotherapeutic fields,

and visits to the area, we've been made increasingly aware of the challenging circumstances faced by the children and young people living there.

The city with the highest child poverty rate in Germany will be our next location, as we decided in March 2023. The planned location in the Lehe district will offer services for around 60 socially disadvantaged children between the ages of 5 and 13.

Another idea that emerged in 2023 is already being put into action: in the future, primary school children in Berlin-Marzahn will receive targeted support to unlock their potential and get academic help at the "Talentschmiede." In addition to homework assistance and tutoring, various workshops will be offered. The focus will be on promoting reading, learning therapy, and providing counseling for parents. Unlike other "Arche" locations that offer a broad range of free programs, the regular workshops at the "Talentschmiede" will require registration. Many children in the Marzahn district grow up in challenging financial and family conditions. They often lack self-worth, self-confidence, and a sense of prospects. They face significant existential and emotional struggles. Due to a lack of adequate support services, their potential is rarely recognized.

OVERVIEW – LOCATIONS, FACTS AND FIGURES



612 employees

161
full time

149
part time*

51
interns and FSJ students

251
volunteers

name	address	start	employees	
			full time	part time*
Die Arche Zentrale Verwaltung	Tangermünder Str. 7, 12627 Berlin	1995	10	8

"Die Arche" Kinderstiftung				
Die Arche Berlin-Hellersdorf	Tangermünder Str. 7, 12627 Berlin	1995	30	19
Die Arche an der Mozartschule	Cottbusser Straße 23, 12627 Berlin	2008	3	0
Die Arche Berlin-Friedrichshain	Mühsamstraße 74, 10249 Berlin	2005	2	5
Die Arche Berlin-Reinickendorf	Romanshorer Weg 113, 13407 Berlin	2010	1	10
Die Arche Berlin-Treptow	Springbornstraße 248a, 12487 Berlin	2015	0	4
Die Arche Berlin-Wedding	Briener Straße 22, 13407 Berlin	2009	3	2
Die Arche Kinderranch	Rheinsberger Str. 11/12, 16775 Sonnenberg-Schulzendorf	2017	2	0
Die Arche Düsseldorf	Werstener Feld 69, 40591 Düsseldorf	2012	3	3
Die Arche Dresden	Jägerpark 12, 01099 Dresden	2017	1	5
Die Arche Frankfurt-Griesheim Kinderhaus	Kiefernstraße 12c, 65933 Frankfurt am Main	2010	7	10
Die Arche Frankfurt-Griesheim Jugendhaus	Kiefernstraße 6a, 65933 Frankfurt am Main	2017	4	0
Die Arche Frankfurt-Nordweststadt	Thomas-Mann-Straße 6a, 60439 Frankfurt am Main	2011	5	2
Die Arche Göttingen	St.-Heinrich-Straße 38a, 37081 Göttingen	2011	1	2
Die Arche Herne	Emscherstr. 96, 44649 Herne	2017	3	1
Die Arche Hamburg-Harburg	Maretstraße 24, 21073 Hamburg	2019	4	0
Die Arche Hamburg-Jenfeld	Görlitzer Straße 10, 22045 Hamburg	2006	19	10
Die Arche Hamburg-Billstedt	Marianne-Timm-Weg 1-2, 22117 Hamburg	2016	4	2
Die Arche Köln	Venloer Straße 417, 50825 Köln	2011	1	3
Die Arche Leipzig	Schiebestraße 32, 04129 Leipzig	2013	2	5
Die Arche Meißen	August-Bebel-Straße 18, 01662 Meißen	2011	6	3
Die Arche München	Am Hartmannshofer Bächl 52, 80997 München	2006	8	5
Die Arche Potsdam	Oskar-Meßter-Straße 2, 14480 Potsdam	2008	6	3
Die Arche Osnabrück	Bremer Straße 126, 49086 Osnabrück	2020	1	2
Die Arche Rostock	Blockmacherring 43, 18109 Rostock	2019	2	0
Die Arche Stuttgart	Danneckerstr. 48 A, 70182 Stuttgart	2023	1	2
HarmonyDog	Brandenburg	2021	1	1

"Die Arche" Christliches Kinder- und Jugendwerk gGmbH				
Die Arche Düsseldorf Kita	Werstener Feld 69, 40591 Düsseldorf	2012	8	5
Die Arche an der Erich-Kästner-Schule	Praunheimer Weg 44, 60439 Frankfurt am Main	2013	3	8
Die Arche an der Grundschule Jenfelder Straße	Jenfelder Straße 252, 22045 Hamburg	2012	9	15
Die Arche Hamburg-Jenfeld Kita	Görlitzer Straße 17, 22045 Hamburg	2021	3	7
Die Arche Spendenkaufhaus	Gotthardstraße 19 - 21, 13407 Berlin	2010	1	2

other locations				
Arka Fundacja Dzieci	ul. Wojnicka 4, 03-77 Warszawa (Warschau), Polen	2014	3	1
Die Arche Kreuzlingen	Romanshorerstraße 29, 8280 Kreuzlingen, Schweiz	2010	2	7

*Marginal employment

THE "ARCHE" IN THE MEDIA

The year 2023 began in great hardship for many people, as inflation, which had steadily risen since the beginning of the Ukraine war the previous year, reached an all-time high. Prices for basic goods continued to rise and stayed elevated for an extended period. For many families, the situation became dire, with more and more parents turning to the "Arche" for food donations.

Although the "Arche" itself was impacted by declining donations and rising prices due to inflation, it quickly set up an emergency fund to meet the increased demand for food from families. As it had in the past, the "Arche" responded swiftly and without bureaucracy to help those in need, regularly organizing larger food distributions. Even food banks, which typically offer affordable food, were unable to accept new customers due to the overwhelming demand.

This situation also shaped the media coverage of the "Arche" in the early months of the year. Numerous me-

dia outlets followed the food distributions, which helped raise awareness and appeal for donations to the emergency relief fund.

"A year ago, we had 50 families picking up groceries here. Today, we expect 1,000 families", "Arche" founder Bernd Siggelkow told RedaktionsNetzwerk Deutschland (RND) during one of the distributions in Berlin-Hellersdorf. People queued for several hundred meters, stretching all the way to the next major road junction, far beyond the "Arche's" actual premises. Speaking to Sat.1 Frühstückfernsehen, the Berliner Kurier, and other media outlets, he also urged politicians to curb rising prices and exempt basic foodstuffs from taxes. Major publications like BILD, Süddeutsche Zeitung, Berliner Zeitung, and Berliner Morgenpost reported extensively on the situation. The federal government's plans for basic child protection also became a widely discussed topic, with the "Arche's" expertise making it a sought-after partner for dialogue.



▲ There were always long queues at the "Arche" food distribution centre in 2023

Specifically, she advocated for a monthly basic income of 600 euros, with half allocated to children's schools or daycare centers and the other half directed towards a paid app for support services and social participation. Bernd Siggelkow discussed this proposal with Stern, Medienmagazin PRO, Frankfurter Rundschau, the Berliner Morgenpost podcast, rbb24 Abendschau, and Deutschlandfunk. "Arche" spokesperson Wolfgang Büscher also spoke with SPIEGEL, ZDFheute, Der Westen, Reuters, Tagesspiegel, radioeins, taz, and appeared on the rbb talk show "Wir müssen reden!" The ARD Mittagsmagazin program visited Berlin-Hellersdorf, as did MDR in Meissen and NDR's "Hamburg Journal" at "Arche" Hamburg-Harburg.

Another significant issue: the supplementary child allowance for families with very low incomes reaches only about one in three eligible children. "Arche" founder Bernd Siggelkow again criticized, during an appearance on rbb24's evening show, that the necessary information doesn't reach the people who need it most.

The combined effects of the Ukraine war and inflation have caused a significant increase in the number of children coming to the "Arche" for food, as reported by Munich site manager Larissa Rauter on ZDF's Volle Kanne program and regional manager Tobias Lucht in the Hamburger Abendblatt newspaper. In Hamburg-Jenfeld, the "Arche" had to provide breakfast for 100 children at a school and distribute food parcels to 140 families every month.

"Socially disadvantaged children are missing out on education, food, and a carefree childhood", shared Ines Lork, site manager of "Arche" Herne, in an interview with WDR 5 Morgenecho. According to the Paritätischer Wohlfahrtsverband, one in five children in Germany is at risk of poverty, and in Berlin, one in four children is affected by poverty. What does this mean for families, and what solutions are needed? The taz visited the "Arche" in Berlin-Hellersdorf and spoke with a single father and press spokesperson Wolfgang Büscher about the situation.



▲ "Arche" founder Bernd Siggelkow in an interview in front of the Brandenburg Gate in Berlin

B.Z. also covered the topic extensively, and Bernd Siggelkow emphasized the need for a fundamental rethink in an interview with Deutschlandfunk Kultur. He stressed that affected children require more contacts and support from trusted adults.

The crises of recent years have placed many families in financially difficult situations. ZEIT online spoke to one such family that relies on support from the "Arche" in Berlin-Wedding. The lingering effects of the pandemic were still clearly felt by children and young people in 2023, as confirmed by a new government report. ARD-Tagesschau visited the "Arche" in Berlin-Hellersdorf, speaking with children about how they've been impacted. Many of them, lacking adequate support, performed better in school in 2020 than they did post-pandemic, as Bernd Siggelkow explained in an interview. The pandemic, alongside rising inflation, has worsened the situation for many children, he also shared during an appearance on ERF-Talk. SPIEGEL TV reported on a "forgotten generation", speaking to those affected and visiting the "Arche" in Berlin-Hellersdorf, where both children and parents find the support they need.

In an interview with ERF Plus, Bernd Siggelkow shared his own story—how he grew up in difficult circumstances, which, alongside his Christian faith, later became the driving force behind the creation of the "Arche". On the "Recharged" podcast, he expressed how proud he is of the children and adults who have overcome their challenges and now work as educators in "Arche" centers.

Positive stories also continued to emerge. For instance, rbb24 visited "Arche" Berlin-Hellersdorf, accompanying social pedagogue Florian Egert, who explained his work—picking up children from school, taking them to the "Arche", where they can eat together, do homework, and play.

For many children, lunch at the "Arche" in Köln is often the first real meal of the day. However, when they come to the "Arche", it's about much more than just food. They meet people who inquire about them, lis-

ten, and give them attention and recognition. As site manager Maike Hess explained in an interview with WDR's Aktuelle Stunde, the children enjoy a variety of activities free of charge, such as eating, playing, and socializing with friends.

Meanwhile, in Frankfurt am Main, a group of young people developed their own iced tea, called "Good Tea", which is professionally marketed and sold in local shops and supermarkets. This entrepreneurial effort was covered by several media outlets, including the Frankfurter Journal and FAZ. The stern magazine featured the "Arche's" "Lerncoaches" project, supported by the RTL – Wir helfen Kindern donation marathon. Donations from HSBC Trinkaus, a long-standing partner in Düsseldorf, were highlighted in the Rheinische Post. The Berlin CDU honored our "Arche's" commitment with the Eberhard Diepgen Prize, which was reported by the Berliner Morgenpost. Additionally, Hallo Herne covered the fifth anniversary of the "Arche" Herne, and Harburg Aktuell reported on the third anniversary of "Arche" Hamburg-Harburg.

Media outlets like Sat.1 Frühstücksfernsehen, ARD Report Mainz, rbb24, RTL News, and Berliner Zeitung also covered the "Arche's" holiday camps in Ludwigsfelde. Meanwhile, the Sächsische Zeitung reported on a charity event with our ambassadors Linda Feller and Uta Bresan in support of the Meissen "Arche".

The Evangelische Zeitung, Stuttgarter Nachrichten, idea, and SWR reported on the opening of the new "Arche" in Stuttgart. Fashion designer Harald Glööckler organized a Christmas charity dinner for the children of the "Arche", which was covered by the Berliner Zeitung as he spoke about his motivations. The renewed Lieferando fundraising campaign for 7,000 free meals, supported by influencers Stefano Zarrella, Jolina Mennen, and Sarah Posh, garnered significant attention on social media. In addition, Sat.1 presented a Christmas donation of 25,000 euros to the "Arche", with presenter Jörg Pilawa handing over the check during Frühstücksfernsehen, an event attended by founder Bernd Siggelkow and spokesperson Wolfgang Büscher.

**BERND SIGGELKOW
WOLFGANG BÜSCHER**

DAS VERBRECHEN AN UNSEREN KINDERN

**Warum junge Menschen scheitern
und was wir dagegen tun müssen**

▲ The crime against our children – Why young people fail and what we need to do about it
Bonifatius Verlag, 256 pages, 21.5 x 13.5 cm, hardcover, ISBN 978-3-98790-036-5, € 22,00 (D)

LOOKING AHEAD

Outlook for the year 2024

As we continue preparing for new locations in Bremerhaven and Berlin-Marzahn, as well as completing construction for the daycare center in Berlin-Hellersdorf, we are also addressing key issues that help bring greater appreciation to our work.

One major initiative is our "Virtuelle Arche" program, which was created during the COVID-19 pandemic and has been continually developed since. This program introduces children and young people to the digital world, offering coding workshops and exploring the topic of artificial intelligence in an engaging way. This area not only interests our employees but is also an exciting educational opportunity for our young visitors. We are planning further innovative projects as part of this initiative.

Language and reading promotion will be a central focus at all "Arche" locations next year, with a well-defined conceptual approach being developed by our employees at the head office in Berlin. Additionally, there will be a greater emphasis on promoting the po-

tential of each child, ensuring they receive the support they need to thrive.

The area of volunteering is also set for further professionalization. Our volunteer coordinator at the head office will provide volunteers with enhanced support and more targeted guidance. A nationwide "Arche" working group has already developed ideas for creating a comprehensive volunteer guideline and improving coordination. Furthermore, we will offer training on motivational and learning methods, as well as educational resources on the history of volunteering.

In early 2024, we will release the new "Arche" book "The Crime Against Our Children" by Bernd Siggelkow and Wolfgang Büscher. This book will offer an in-depth look at our work, featuring stories and experiences from our everyday efforts to support children and young people. Looking ahead, we expect another year full of major challenges, but we are hopeful that we will successfully realize all our plans. Our ultimate goal remains to continue providing vital support to children and young people in need.



▲ The building of the planned "Arche" in Bremerhaven

FINANCES

Source of funds: In 2022, "Die Arche" Kinderstiftung received a total of € 20,986,791.17. The total is made up of donations in cash and in kind, funding from foundations and other bodies, public grants, monetary contributions and other income, such as income from asset management, insurance compensation, reimbursements, contributions and other proceeds.

We received grants totalling € 633,081.30 from the public sector for our services; foundations and other bodies supported our work with a total of around € 335,829.31. We received € 202,710.00 from fines. Once again this year, however, we owe the majority of our income to our donors, who include private individuals, companies, associations and foundations. Together, they supported us with a total of € 19,357,616.33. The income from asset management brought in € 56,477.10. There were also donations in kind totalling € 389,685.50. Other income totalled € 401,077.13.

Use of funds: In order to fulfil the statutory tax-privileged purpose of the "Arche", € 12,072,385.39 were invested in supporting and promoting the children and young people who attend our facilities. Building and maintaining trusting and reliable relationships with our protégés and their families is the cornerstone of our daily work. The largest share of expenditure for the realization of our objectives was therefore once again attributable to personnel costs amounting to € 9,534,510.00. In addition costs of € 2,537,875.39 were incurred for our services – such as providing lunch and other support services, excursions, camps, workshops, homework help and family work.

Rent, ancillary and operating costs for our "Arche" locations amounted to € 1,374,816.33 this year. We invested € 1,206,116.84 in the necessary administration (incl. personnel) and € 1,061,230.60 in public relations (incl. personnel). Other expenses, for example for training, insurance, repairs and maintenance, advertising, travel and vehicle costs as well as depreciation totalled € 1,254,227.89 for all "Arche" locations.

In order to cover future costs for ongoing or newly planned projects, reserves of € 4,018,014.13 were created. Of this amount, € 1,500,000.00 is earmarked for the construction of a daycare center in Berlin-Hellersdorf (until the end of 2024), € 500,000.00 for investment in a new project and € 2,018,014.13 for existing projects of the Children's Foundation (less reversal of reserves).

As a tax-privileged organization, we are fundamentally obliged to use the funds entrusted to us in a timely manner for the realization of our tax-privileged statutory purposes, whereby a timely use of funds includes the two calendar years following the inflow. In addition, reserves may be formed in order to utilize funds in a targeted manner.

The work of the "Arche" is largely financed by donations – all the more reason for us to feel obliged to use the funds entrusted to us in a strategic and economical manner. **Expenditure on public relations and administration is only 10.81%.** Anyone who supports the work of the "Arche" can be sure of this: Every contribution creates valuable resources that directly benefit disadvantaged children and teenagers on a daily basis.

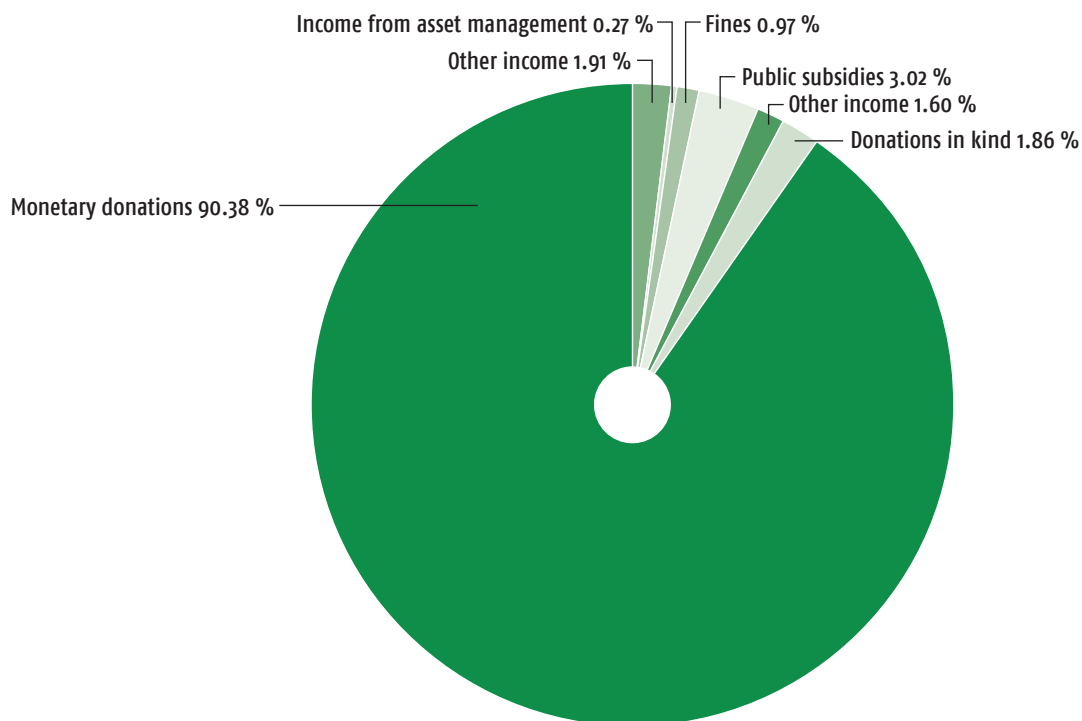
Certificate: "Die Arche" Kinderstiftung Christliches Kinder- und Jugendwerk has undergone an annual audit by the auditor Dipl.-Kfm. Martin Kowert.

In addition to the annual financial statements, comprising the balance sheet as of December 31, 2023 and the income statement for the financial year from January 1 to December 31, 2023, including the accounting and valuation methods, the audit also included an examination of the preservation of the foundation's assets and the use of income and any donations in accordance with the articles of association.

The audit did not give rise to any objections. An unrestricted audit opinion was issued.

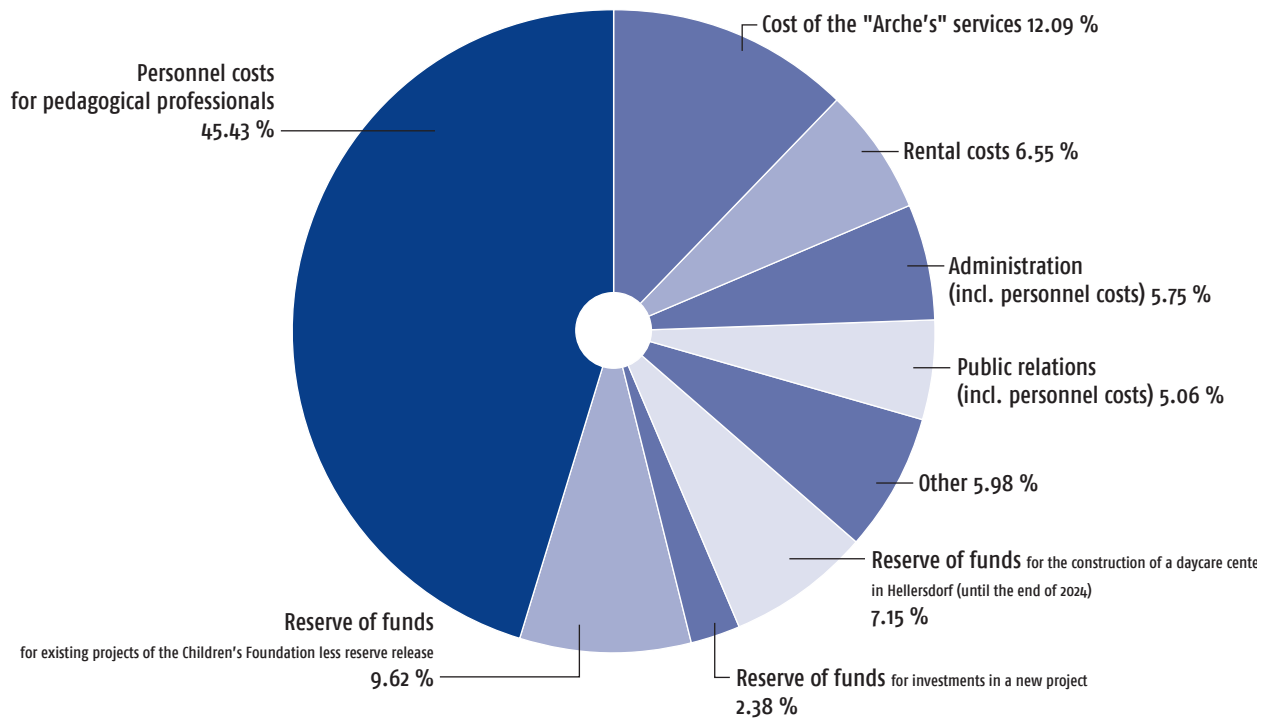
FINANCES

Source of funds



Income 2023	Amount	Percentage
Donations		
Monetary donations	€ 18,967,930.83	90.38 %
Donations in kind	€ 389,685.50	1.86 %
Total	€ 19,357,616.33	92.24 %
Other income		
Other grants (grants from foundations and other bodies)	€ 335,829.31	1.60 %
Public subsidies	€ 633,081.30	3.02 %
Fines	€ 202,710.00	0.97 %
Income from asset management	€ 56,477.10	0.27 %
Other income (including insurance compensation, reimbursements, sales and contributions)	€ 401,077.13	1.91 %
Total	€ 1,629,174.84	7.76 %
Total revenue	€ 20,986,791.17	100.00 %

Use of funds



Expenditures 2023	Amount	Percentage
Children and youth work		
Personnel costs for pedagogical professionals and educators	€ 9,534,510.00	45.43 %
Costs of the "Arche's" services	€ 2,537,875.39	12.09 %
Total	€ 12,072,385.39	57.52 %
Other expenditure		
Rental costs	€ 1,374,816.33	6.55 %
Administration (incl. personnel costs)	€ 1,206,116.84	5.75 %
Public relations (incl. personnel costs)	€ 1,061,230.60	5.06 %
Other (such as grants paid, vehicle costs, insurance, depreciation and training costs)	€ 1,254,227.89	5.98 %
Reserve of funds for the construction of a daycare center in Hellersdorf (until the end of 2024)	€ 1,500,000.00	7.15 %
Reserve of funds for investments in a new project	€ 500,000.00	2.38 %
Reserve of funds for existing projects of the Children's Foundation less reserve release	€ 2,018,014.13	9.62 %
Total	€ 8,914,405.78	42.49 %
Total expenditure	€ 20,986,791.17	100.00 %

WE SAY THANK YOU!

Central donations account

Die Arche Kinderstiftung
IBAN: DE82 3702 0500 0003 0301 00
BIC: BFSWDE33XXX

Keyword: Purpose + name and address
for your donation receipt



**THE "ARCHE" IMMEDIATE DONATION
SCAN THE QR-CODE AND OFF YOU GO!**

Would you like to have a visual impression of the atmosphere in the "Arche"?
On our homepage or our Facebook, Instagram, Twitter, YouTube and LinkedIn accounts you will find
wonderful impressions, lively reports and pictures. Please take a look!



IMPRINT

Publisher

"Die Arche" Kinderstiftung Christliches Kinder- und Jugendwerk

Address

Tangermünder Str. 7
12627 Berlin

Contact us

Phone: +49 (30) 992 88 88 00

Fax: +49 (30) 992 88 88 01

E-mail: info@kinderprojekt-arche.de

Website: www.kinderprojekt-arche.de

Represented by the Executive Board

Bernd Siggelkow, Dr. Clemens Beck

Editorial office

David Täubert, Paul Höltge, Ulla Niehoff-Büscher, Lina Meyer

Design

Lennart Fischer, Berlin

All texts and photos are protected by copyright. Reproduction – even in part – is only permitted with prior written permission of the author.

Transparency International Germany

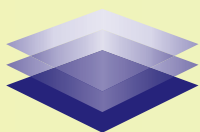
In Germany, there are no uniform disclosure requirements for civil society organizations. Transparency helps to make their own work comprehensible to the public and donors, thereby strengthening trust and credibility.

In 2010, on the initiative of Transparency International Deutschland e.V., numerous actors from civil society and academia defined ten fundamental points that every civil society organization should make accessible to the public.

"Die Arche" Kinderstiftung has joined the initiative as one of 1.519 organizations and publishes all the facts and figures on its own website.

Further information can be found at:

www.kinderprojekt-arche.de/ueber-uns/transparenz



Initiative
Transparente
Zivilgesellschaft

Membership

Diakonie 

Mitglied im Diakonischen Werk
Berlin-Brandenburg-schlesische Oberlausitz

Mitglied im



Bundesverband
Deutscher
Stiftungen



"Die Arche" Kinderstiftung Christliches Kinder- und Jugendwerk
Tangermünder Str. 7
12627 Berlin

Phone: +49 (30) 992 88 88 00

Fax: +49 (30) 992 88 88 01

E-mail: info@kinderprojekt-arche.de

Website: www.kinderprojekt-arche.de

